



Luxury Pink Cylinder Chocolate Box Rigid Paper Candy Macaron Top Bottom Tube Packaging With Ribbon

Our Product Introduction

for more products please visit us on custom-packagingbox.com

Basic Information

- Place of Origin: shenzhen china
- Brand Name: OEM/ODM
- Certification: ISO certificate, Disney, Sedex, FSC
- Model Number: Chocolate paper box 005
- Minimum Order Quantity: 500
- Price: discussible
- Packaging Details: Carton Packing
- Delivery Time: 18-25
- Payment Terms: Western Union,T/T,MoneyGram,L/C
- Supply Ability: 200000 Piece/Pieces Per Month



Product Specification

- Sample Time: 4-7 Working Days
- Thickness: 1.5mm
- Size: 22x22x19cm
- Print Color: Pink, Gold, Green
- Material: 1000gsm Paperboard, 157gsm Art Paepr, Card Paper
- Accessories: Dark Green Ribbon, Card Paper Dividers, PET Insert
- Highlight: Cylinder Chocolate Paper Box, Rigid Paper Chocolate Paper Box

XL PACKAGING



More Images



Product Description

Luxury Pink Cylinder Chocolate Box Rigid Paper Candy Macaron Top Bottom Tube Packaging With Ribbon

Introducing our exquisite chocolate paper box - a pink 3-piece set crafted from 1000g cardboard and 157g coated paper. Chocolate tube top cover is in a charming pink hue, with pink and shiny shiny gold foil embellishments on the sides, giving chocolate gift box a sophisticated design element. The addition of a wide deep green satin bow on the chocolate boxes lid enhances its beauty, while a card printed with deep green and customer logo adds a personalized touch. Chocolate box packaging bottom cover features pink with full gold foil printing in a matte finish, elevating the round chocolate tube box premium appearance. The interior chocolate box is printed in deep green, featuring cardboard dividers and a food-grade PET tray for secure food packaging.

Whether for yourself or to share with others, a Chocolate Paper Box is always a great choice. Chocolate Paper Box, Chocolate Paper Box. Experience the magic of a Chocolate Paper Box and let it fulfill your chocolate cravings. Chocolate Paper Box, Chocolate Paper Box.

Perfect for gifting or personal enjoyment, this chocolate box exudes elegance and quality craftsmanship. Elevate your chocolate gifting experience with our luxurious chocolate paper box packaging.

Why Choose This Luxury Pink Cylinder Box?

Visual Luxury: Pink hues and ribbon detailing create an elegant, feminine aesthetic perfect for gifting.

Freshness Preservation: Rigid structure and food-safe linings maintain confection quality.

Unboxing Drama: Ribbon-tied cylinder and secure closure build anticipation for the reveal.

Brand Elevation: Foil stamping and embossing reinforce premium branding for chocolatiers or patisseries.

Technical Specifications

Material: 800gsm+ rigid paperboard, pink matte/gloss lamination

Closure: Friction-fit top-bottom caps (magnetic optional)

Ribbon: Satin/organza (width: 2cm-5cm), custom colors

Interior: FDA-compliant parchment paper, die-cut foam insert

Compliance: FDA food contact safe, eco-certified materials available

Ordering Process

Design Consultation: Share product dimensions, preferred pink shade, and ribbon material.

3D Mockup & Sample: Review digital proof and physical sample to test insert fit and ribbon placement.

Premium Production: Precision die-cutting, foil stamping, and hand-tied ribbon finishing.

Bulk Delivery: Flat-packed shipping with protective inserts, ideal for retail or event gifting.

Package sweetness in luxury. Contact us to create custom pink cylinder chocolate boxes with ribbon detailing, designed to showcase your gourmet confections and deliver an unforgettable gifting experience for weddings, holidays, or premium retail.

Discover elegant pink cylinder chocolate boxes for premium treats. Gold-trimmed, customizable with logos, and available in various sizes. Ideal for luxury brands and special occasions. Shop high-quality packaging today!

Product Description

Item	Luxury Pink Cylinder Chocolate Box Rigid Paper Candy Macaron Top Bottom Tube Packaging With Ribbon
Keywords	Pink Chocolate Tube Box, Chocolate Packing tube Box, Chocolate Cylinder
Size	customizable
Printing Colors	Pink, gold, dark green
Surface Disposal	Matt lamination, gold foil
Boxes Accessories	Dark green ribbon, Card paper dividers, PET insert
MOQ	500pcs
Artwork Formats	AI, PDF, CDR, ETC are welcomed
Packaging	Poly bag, Standard Export Carton
Sample Time	5-7 days for Chocolate Paper Box
Production lead time:	15-20 days for Round Chocolate Paper Box
Payment	30% deposit in advance, 70% balance against B/L.
QC	3 times from material selection,100% inspection for mass goods.
Certificate	ISO certificate, Disney, Sedex, FSC .



XL PACKAGING





Blister



Cardboard



EPE Foam



EVA



Laser Engraving



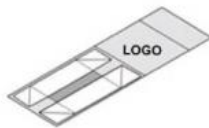
Ribbon



Silk Fabric



Velvet with EVA



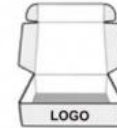
Folding Gift Box



Cylinder Box



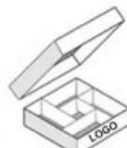
Paper Bag



Shipping Box



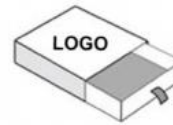
Magnetic Gift Box



Base and lid Box



Flip Box



Slide Drawer Box

CMYK or PANTONE

Blue Red yellow Black (Be used for the printing of varied colors)



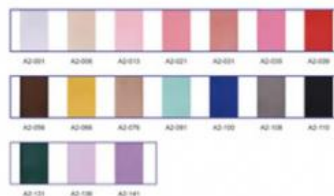
Surface Paper you can choose



Polyester Grosgrain ribbon n ribbon



Polyester satin ribbon





SPOT UV



DEBOSSING



EMBOSSING



FOIL STAMP



Gloss Laminate



MATTE LAMINATE



Soft Touch Laminate



Texture



FAQ:

1. Are you a trader or manufacturer?

We are both. We have our own factory concentrating on gift box production in Dongguan.

2. What's your main products?

We focus on paper printing and packaging. For meeting our customer demands, we also supply promotion gift items.

3. What is your delivery time?

It depends on your order item and quantity, 7-30 days accordingly.

4. Can I request samples?

In stock samples are free, can be sent to you in 3 days, and the OEM samples in 5-7 days.

5. What's the shipping way?

Regarding the small quantity order, we can send them by DHL/Fedex express which we have 35% discount and the large quantity goods are shipped by ocean shipping according to client's demands.

6. Can you accept OEM or ODM?

Yes of course. And logo acceptable.

7. Still can't find the answer.

Please email us and we will try to help.



Shenzhen Xianglong Paper Product & Packaging Co., Ltd.

755 86 28357756

anna01@xlpackaging.com

custom-packagingbox.com

1810, iSteel Asia No.1, 18 Fuan Avenue, Pinghu Sub-district, Longgang District, Shenzhen, China. post code: 518111