

XL Packaging Custom Packaging Box Factory Customized Color Printing Kraft Paper Rigid Paper Board Gift Packaging Box For Candle

Our Product Introduction

Basic Information

- Place of Origin: shenzhen china
- Brand Name: OEM/ODM
- Certification: ISO certificate, Disney, Sedex, FSC
- Model Number: Gift Packaging Box 0018
- Minimum Order Quantity: 500
- Price: discussible
- Packaging Details: Carton Packing
- Delivery Time: 18-25
- Payment Terms: Western Union,T/T,MoneyGram,L/C
- Supply Ability: 200000 Piece/Pieces Per Month

XL PACKAGING



Product Specification

- Size: Customized Size
- Custom Order: Accept
- Industrial Use: For Gift Box Paper
- Printing Handling: Matt Lamination,Glossy Lamination
- Feature: Handmade
- Paper Type: Paperboard,Corrugated Board,300gsm
Cardboard Paper For Gift Box Paper
- Highlight: **Rigid Paper Board Gift Packaging Box,
Customized Color Printing Rigid Gift Box,
Gift Packaging Box For Candle**

XL PACKAGING



for more products please visit us on custom-packagingbox.com

Product Description

XL Packaging Custom Packaging Box Factory Customized Color Printing Kraft Paper Rigid Paper Board Gift Packaging Box For Candle

Do you need to customize 500 custom gift boxes? Click to obtain a detailed quotation including material/process/duration
<https://www.custom-packagingbox.com/contactus.html>

Not sure if the magnetic buckle box is suitable for your product? Click to apply for free samples (only need to pay for shipping)
<https://www.custom-packagingbox.com/contactus.html>

[Request a Quote] [Get a Sample] <https://www.custom-packagingbox.com/contactus.html>

<https://www.custom-packagingbox.com/sale-47148453-luxury-lid-candle-box-gift-perfume-craft-special-open-candle-packaging-box-with-logo.html>

<https://www.custom-packagingbox.com/sale-45063671-luxury-custom-box-custom-wholesale-gift-packaging-premium-luxury-cosmetic-magnetic-gift-boxes-for-gi.html>

<https://www.custom-packagingbox.com/sale-44920049-kraft-paper-folding-perfume-box-white-drawer-fragrance-paper-box-packaging-with-handle.html>

- Superior Durability: Our Candle Paper Box is crafted from premium thick cardstock, ensuring it can support the weight of your candles while remaining resistant to tearing and deformation during transit, making it the ideal packaging solution.
- Moisture-Resistant Design: Engineered with moisture-resistant paper, this candle box effectively protects your candles from damage caused by heat and humidity, ensuring they stay fresh and intact for longer periods.
- Safety First: Although paper cannot be fireproof, our Candle Paper Box is made from low-flammability materials, offering added safety when storing and displaying your candles, giving you peace of mind.
- Customizable and Stylish: With a smooth surface finish, our Candle Paper Box is perfect for printing your designs, logos, or vibrant graphics. Choose from various textures to achieve the aesthetic that best enhances your candles' appeal.
- Eco-Friendly Option: Committed to sustainability, our Candle Paper Box is available in recycled or eco-friendly paper options, allowing you to minimize your environmental impact while still offering an attractive and functional product. Enjoy reliable quality with the assurance of responsible sourcing!

The Candle Paper Box - A Glowing Keepsake

The material of the Candle Paper Box is chosen with great thought. It might be a fine quality paper, soft to the touch yet strong enough to protect the precious candle within. The paper could have a subtle sheen or a matte finish, adding to its allure. Candle Paper Box.

The design of the Candle Paper Box can vary, from classic and timeless to modern and avant-garde. Intricate patterns, floral motifs, or simple yet elegant lines adorn its surface, making it a visual treat. Candle Paper Box.

Not only does the Candle Paper Box enhance the aesthetic appeal of the candle, but it also serves a practical purpose. It keeps the candle safe from dust and damage, ensuring that when you light it, the flame burns bright and steady. Candle Paper Box

A Candle Paper Box can transform an ordinary candle into a special gift. Presented to a loved one, it conveys thoughtfulness and affection. The recipient will not only appreciate the candle but also the carefully chosen box that holds it. Candle Paper Box

In a world filled with chaos and stress, lighting a candle within a beautiful Candle Paper Box can create a serene and calming atmosphere. It becomes a source of comfort and relaxation, a small haven in the midst of a busy life. Candle Paper Box So, whether it's for yourself or as a gift for someone dear, the Candle Paper Box is more than just a box. It's a symbol of peace, beauty, and the simple joys of life. Candle Paper Box

Product Description

| Item | Candle Packaging Box Paper Gift Box |
|-------------------|---|
| Size | Length*Width*Height(cm) Customized |
| Usage | perfume packing,cosmetic kit packing, candle packing |
| Type of Shipping | express, air, train, sea shipping |
| Color Printing | Pantone colors(PMS) or common 4 colors(CMYK) process |
| Custom Box Design | empty box for gift packaging |
| Surface Disposal | Hot Stamping, Varnishing, Spot UV etc. |
| Sample Time | 5-7 days for Advent Calendar Box |
| Boxes Accessories | Cardboard/Hardboard tray, |
| Payment | 50% deposit in advance, 50% balance against B/L. |
| QC | 3 times from material selection,100% inspection for mass goods. |
| Certificate | ISO certificate, Disney, Sedex, FSC . |

XL PACKAGING



XL PACKAGING





Blister



Cardboard



EPE Foam



EVA



Laser Engraving



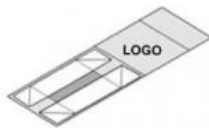
Ribbon



Silk Fabric



Velvet with EVA



Folding Gift Box



Cylinder Box



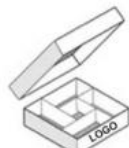
Paper Bag



Shipping Box



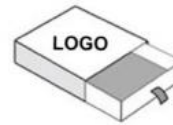
Magnetic Gift Box



Base and lid Box



Flip Box



Slide Drawer Box

CMYK or PANTONE

Blue Red yellow Black (Be used for the printing of varied colors)



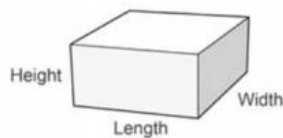
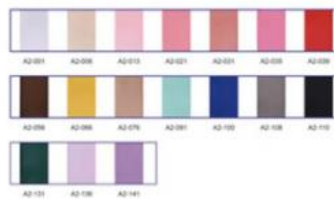
Surface Paper you can choose



Polyester Grosgrain ribbon n ribbon



Polyester satin ribbon





SPOT UV



DEBOSSING



EMBOSSING



FOIL STAMP



Gloss Laminate



MATTE LAMINATE



Soft Touch Laminate



Texture



Shenzhen Xianglong Paper Product & Packaging Co., Ltd.

☎ 755 86 28357756

✉ anna01@xlpackaging.com

🌐 custom-packagingbox.com

1810, iSteel Asia No.1, 18 Fuan Avenue , Pinghu Sub-district, Longgang District, Shenzhen ,China . post code :518111