



Customized 100% Virgin Wood Pulp Soft Packed Paper Facial Tissue Strong Water Absorption For Hotel

Our Product Introduction

for more products please visit us on custom-packagingbox.com

Basic Information

- Place of Origin: shenzhen china
- Brand Name: OEM/ODM
- Certification: ISO certificate
- Model Number: paper tissue-008
- Minimum Order Quantity: 5000
- Price: discussible
- Packaging Details: Carton Packing
- Delivery Time: 18-25
- Payment Terms: Western Union,T/T,MoneyGram,L/C,D/A,D/P
- Supply Ability: 200000 Piece/Pieces Per Month

XL PACKAGING



Product Specification

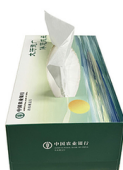
- Product Name: Customizable Facial Tissue Paper
- Material: Virgin Wood Pulp
- Sample Time: 1-3days
- Usage: Face Cleaning/Home Hotel Restaurant
- Feature: Strong Water Absorption
- Thickness: 2/3/4/5PLY
- Highlight: **Strong Water Absorption Facial Paper Tissue, Customized Facial Paper Tissue, Soft Packed Paper Facial Tissue**

XL PACKAGING



More Images

XL PACKAGING



Product Description

Custom Private Label White Virgin Pulp Boxed Facial Tissue 3-4 Ply Water Absorption Paper Home Use

Facial Paper Tissue is usually made using the following manufacturing process:

1, Raw material preparation

Pulp selection:

Facial tissue paper is generally made from virgin wood pulp or bamboo pulp as the main raw materials. Native wood pulp fibers are longer, have high softness, good toughness, and can provide a good user experience. Bamboo pulp has the characteristics of environmental protection and natural antibacterial properties.

Some facial tissues may also contain a certain proportion of recycled fibers, but it is necessary to ensure that they meet quality standards and do not affect the softness and water absorption of the product.

additive:

In order to improve the performance of facial tissue paper, some additives such as wet strength agents may be added to increase the strength of the paper in a wet state and prevent it from breaking when exposed to water; Softener makes paper softer and skin friendly.

2, Pulp making process

Crushed pulp:

Put the raw materials (wood pulp board, bamboo slices, etc.) into a pulper, add an appropriate amount of water, and decompose them into fiber suspension through mechanical stirring and hydraulic action.

During this process, impurities and foreign objects in the raw materials can be removed to ensure the purity of the pulp.

Beating:

The fiber suspension after pulping enters the pulping machine, and the fibers are mechanically cut, spun, and broom treated to adjust performance indicators such as fiber length, strength, and softness.

The degree of beating will be adjusted according to the different uses and requirements of the facial tissue. For example, facial tissue used for facial cleaning may require softer fibers, and the beating time will be relatively long.

3, Paper making process

Slurry preparation:

Mix the pulp after beating with an appropriate amount of water and additives to form a uniform pulp suspension. According to the requirements of the product, parameters such as pulp concentration and color can be adjusted.

Some facial tissues may have added dyes or fragrances to increase the attractiveness of the product.

Paper copying:

The prepared pulp suspension is evenly sprayed onto the web of the paper machine through the flow box, and under the action of gravity and vacuum suction, the fibers form wet paper sheets on the web.

The design and operating parameters of the mesh section can affect the uniformity and thickness of the paper. Wet paper sheets are further dehydrated through the pressing section to improve the dryness and strength of the paper.

dry:

The pressed wet paper enters the drying section and is dried by steam heating or hot air to reduce the moisture content of the paper to an appropriate range.

During the drying process, it is necessary to control parameters such as temperature and wind speed to ensure stable paper quality. After drying, the paper undergoes processes such as gluing and calendering to improve its surface smoothness and waterproof performance.

4, Processing and packaging

Splitting:

After drying, the large roll of paper is cut into small rolls or sheets of different sizes according to the specifications of the product. During the slitting process, it is necessary to ensure the dimensional accuracy and edge neatness of the paper.

Folding and packaging:

The cut paper is folded by a folding machine to form common shapes such as tissue paper, handkerchief paper, etc. The folding method and number of layers will be adjusted according to the design and purpose of the product.

Folding facial tissues are usually packaged using plastic film, paper boxes, and other packaging materials to protect the paper from contamination and damage. During the packaging process, printing, coding, and other operations can be performed to label the product's brand, specifications, production date, and other information.

5, Quality inspection

Physical performance testing:

Conduct physical performance testing on the produced facial tissue paper, including thickness, weight, water absorption, softness, strength, and other indicators. Use professional testing equipment such as thickness gauges, electronic scales, water absorption testers, softness testers, etc. to ensure that the product meets quality standards.

Health indicator testing:

Check the hygiene indicators of facial tissues, such as total bacterial count, total fungal count, coliform bacteria, Staphylococcus aureus, etc. Adopting microbiological testing methods to ensure the hygiene and safety of products.

Appearance inspection:
Inspect the appearance of the product, including the color, uniformity, stains, and damage of the paper. Ensure that the appearance quality of the product meets the requirements.

Through the above manufacturing process, the "Facial Paper Tissue" produced has the characteristics of softness, strong water absorption, and gentle skin, meeting various needs of people in daily life.

Product Description

Item	Custom Private Label White Virgin Pulp Boxed Facial Tissue
Material	virgin Wood pulp/ Bamboo pulp or customized
Layer	OEM, 2/3/4 ply
Brand Name	OEM
Paper weight/density	13.5 gsm/OEM
Embossing	Edge embossed or customized
Color	white/unbleached
Payment	50% deposit in advance, 50% balance against B/L.
QC	3 times from material selection,100% inspection for mass goods.

 XL PACKAGING





How to get **“Free sample”**?

Send inquiry “send your inquiry details in the below, clicknow!”

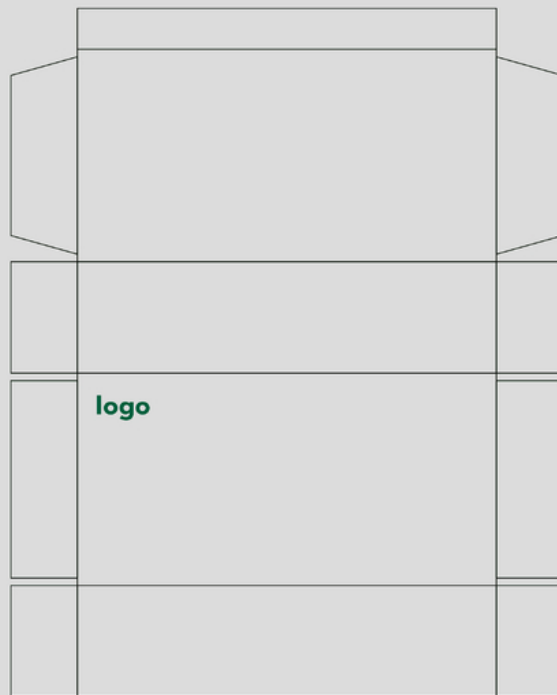


10+Experience Factory Supply



Professional custom

Design for Free



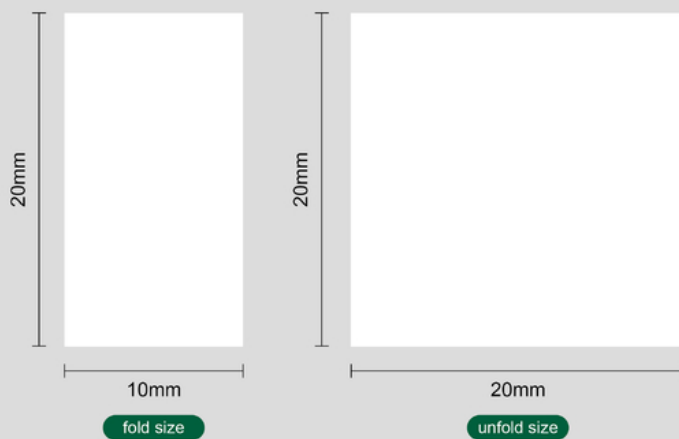
logo

tagline

telephone

address

Paper size (Can be customized)



Good tissue to see the details

Quality of product details

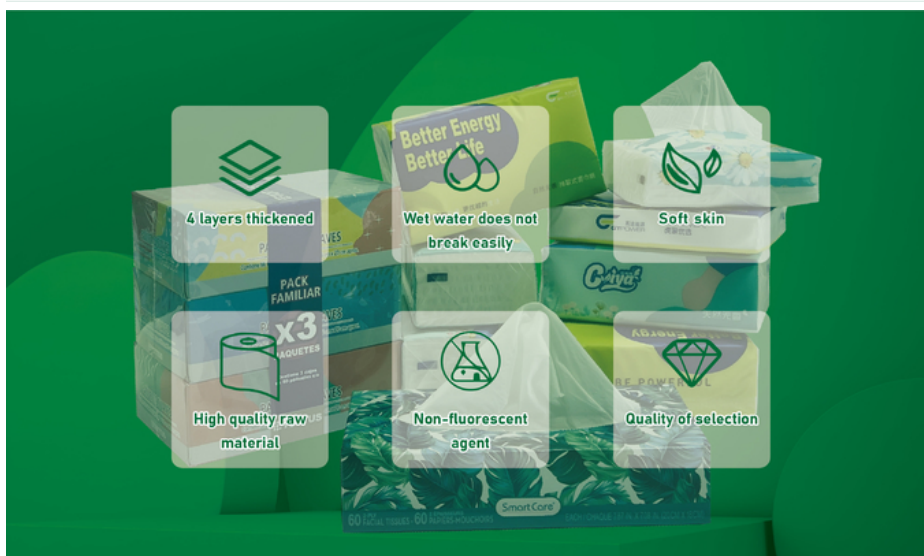


Select material

- High quality original wood pulp
- The paper is soft and skin-friendly
- Rest assured to use

Wet water does not break

- 4 layer thickening design
- Strong water absorption
- Both wet and dry



F&A

1.Are you a trader or manufacturer?

We are both.We have our own factory concentrating on gift production in dongguan.

2. What's your main products?We focus on printing and packaging. For meeting our customer demands, we also supply promotion gift items.

3. What is your delivery time?

It depends on your order item and quantity,7-30 days accordingly.

4. Can I request samples?

In stock samples can be sent you in 3 days, and the OEM samples in one week.

5. What's the shipping way?

Regarding the small quantity order, we can send them by DHL/Fedex express which we have 35% discount and the large quantity goods are shipped by ocean shipping according to client's demands.

6. Can you accept OEM or ODM?

Yes of course. And logo acceptable.

7. Still can't find the answer.

Please email us and we will try to help.



Shenzhen Xianglong Paper Product & Packaging Co., Ltd.



755 86 28357756



anna01@xlpackaging.com



custom-packagingbox.com

1810, iSteel Asia No.1, 18 Fuan Avenue, Pinghu Sub-district, Longgang District, Shenzhen, China. post code :518111