



## Custom Design Paper Christmas Chocolate Packaging Lid Base Box with Insert White EVA

### Our Product Introduction

for more products please visit us on [custom-packagingbox.com](http://custom-packagingbox.com)

#### Basic Information

- Place of Origin: shenzhen china
- Brand Name: OEM/ODM
- Certification: ISO certificate, Disney, Sedex, FSC
- Model Number: Gift Packaging Box
- Minimum Order Quantity: 500
- Price: discussible
- Packaging Details: Carton Packing
- Delivery Time: 18-25
- Payment Terms: Western Union, T/T, MoneyGram, L/C
- Supply Ability: 200000 Piece/Pieces Per Month

XL PACKAGING



#### Product Specification

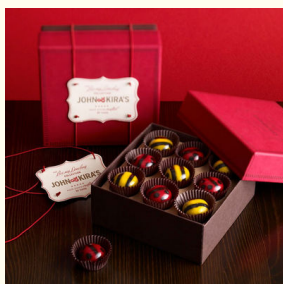
- Material: 157gsm Art Paper+2mm Hard Paperboard
- Insert: White EVA
- Accessary: Ribbon
- Design: Client Provide
- Packing: Standard Export Carton
- Sample: Plain Sample 1-2days, Colorful Sample 4-7days;
- Printing Technics: Matt Lamination, Embossed
- Box Shape: Flat Edge Round Paper Tube
- Sample Time: 5-7 Days
- Print: White, Black Foil, Embossing
- Box Structure: 3 Parts Lid And Base Chocolate Box
- Highlight: **Lid Base Paper Christmas Chocolate Packaging**  
**Custom Design Paper Christmas Chocolate Packaging**

XL PACKAGING



#### More Images

XL PACKAGING



## Product Description

### Custom Design High Quality Paper Christmas Chocolate Packaging Lid & Base Box Chocolate Gift Box For Birthday

A custom design high-quality paper Christmas chocolate packaging lid & base box that can also be used as a chocolate gift box for birthdays offers several appealing features. Here's a detailed look at what makes it a great choice:

#### Design and Appearance

##### High-Quality Paper:

**Material Selection:** The use of high-quality paper is crucial as it determines the durability and overall look of the box. Options could include thick cardstock or paperboard that can hold its shape well and provide a solid base and lid. The paper can also be chosen based on its texture, such as a smooth finish for a sleek look or a textured one like linen or embossed patterns to add a touch of sophistication.

**Printing Quality:** High-quality printing techniques can be employed to bring the design to life. Whether it's offset printing for sharp and vibrant colors or digital printing for more intricate and detailed graphics, the box can showcase beautiful Christmas-themed or birthday-specific imagery. This could include images of chocolates, festive elements like snowflakes and Christmas trees for the holiday season, or balloons and candles for birthdays.

##### Lid & Base Design:

**Functionality:** The separate lid and base design adds an element of elegance and practicality. The lid can fit snugly over the base, protecting the chocolates inside from dust, moisture, and accidental spills. It also makes it easy to open and close the box, enhancing the user experience.

**Aesthetic Appeal:** The lid and base can be designed with complementary or contrasting colors and patterns. For example, the lid could have a shiny foil finish with a decorative Christmas or birthday design, while the base is a solid color that provides a stable foundation. This contrast can make the box visually appealing and draw attention.

##### Customization:

**Branding:** You can incorporate your brand logo or a personalized message on the box. This is especially important if it's being used as a gift box for birthdays or as part of a business's Christmas product line. The logo can be placed strategically, perhaps on the lid or the front of the base, to increase brand visibility and recognition.

**Thematic Customization:** Tailor the box to the specific occasion. For Christmas, it could feature traditional red and green colors, Santa Claus motifs, or reindeer illustrations. For birthdays, it might have the recipient's name, age, or favorite colors incorporated into the design. This level of customization makes the box unique and more meaningful.

##### Benefits for Packaging

**Protection:** The sturdy lid and base construction, along with the quality paper material, ensures that the chocolates are well-protected. It safeguards them from physical damage during transportation and storage, as well as from environmental factors like humidity that could affect the quality of the chocolates.

**Presentation:** The custom design and high-quality appearance make the box an excellent choice for gifting. Whether it's for a Christmas present or a birthday gift, it elevates the perceived value of the chocolates. The recipient will appreciate the thought and effort put into the packaging, making the gift more special.

**Branding and Marketing:** Customizing the box with your brand elements helps to build brand awareness and loyalty. If it's part of a business's product line, it can attract customers during the holiday season or for birthday-related purchases. The box becomes a walking advertisement and can influence repeat purchases.

**Versatility:** While designed for chocolates, the box can also be used to package other small treats or gifts, making it a versatile option for different occasions and product offerings.

##### Considerations for Customization

**Size and Fit:** Measure the chocolates or other items you plan to package accurately. The box should have enough space to hold them comfortably without being too large (which could make the contents shift around) or too small (which might cause the chocolates to be squashed). Consider adding inserts or dividers if needed to keep the chocolates in place.

**Cost:** Custom-designed high-quality paper boxes can vary in cost depending on the materials, printing, and customization options chosen. It's important to balance your budget with the desired level of quality and design. Sometimes, investing a bit more in packaging can enhance the overall product's appeal and justify the price.

**Supplier Selection:** Look for reliable suppliers with a good track record in producing custom paper packaging. They should be able to provide samples, offer advice on design and material choices, and ensure timely delivery. Check their reviews and ask for references to make sure you're getting a quality product.

**Sustainability:** In today's environmentally conscious market, consider using recycled or eco-friendly paper materials if possible. This can enhance your brand's reputation and appeal to consumers who prioritize sustainability.

In conclusion, a custom design high-quality paper Christmas chocolate packaging lid & bas

### Product Description

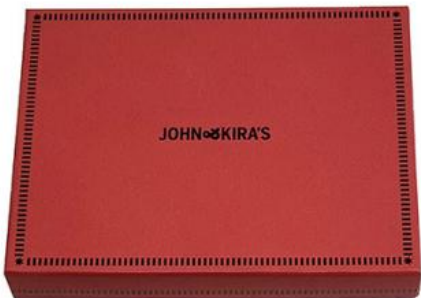
Item	Customized design decorative packaging box for chocolate custom Magnetic paperboard book shaped box with PVC
Box Shape	book shaped box
Material	157gsm artpaper+2mm hard paperboard
Size	Accepted Customized
Feature	Eco-friendly
Printing Handling	CMYK+Matt Lamination
Design	customer provide
Colour	Accept Customized Logo Printing
Sample	plain sample 1-2days, colorful sample 4-7days;
Type of Shipping	express, air, train, sea shipping
Boxes Accessories	blister tray+PVC window
Usage	chocolate

MOQ	500pcs
Certificate	ISO certificate, Disney, Sedex, FSC .
Artwork Formats	AI, PDF, CDR, ETC are welcomed
Payment	30% deposit in advance, 70% balance against B/L.

 **XL PACKAGING**

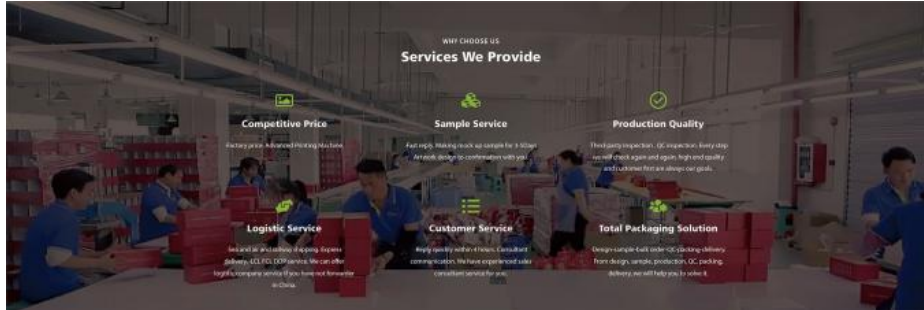


 **XL PACKAGING**



# OEM ODM SERVICE

One-Stop Packaging And Printing Service Manufacturer



## How To Cooperation with Us?

Total packaging cooperation with XL packaging, tell you how to custom packaging with us.

### 01. Get quote

Send to quote to us, the details about MOQ, design, logo, size etc.

### 02. Design

Artwork design confirmation with us. (PDF, CDA etc.)

### 03. Making sample

To make sure product satisfied with you, we suggest that make a sample before bulk order production.

### 04. Production

Any details confirmation start to production. The time will depends on your quantities. In generally 10-15 days.

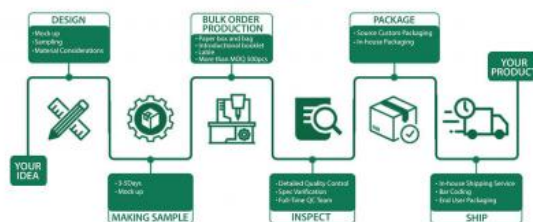
### 05. QC&Packing

Before delivery, our QC Inspector or customer will check the quality, no any problems will keep going next process.

### 06. Delivery Service

We will confirm address with you again, if you have no forwarder in China, we will help you find or offer you delivery service.

## HOW TO CUSTOMIZED??



- 1:Our products are of various kinds and all of paper packaging can be customized.
- 2:Design is our core competitiveness, show us a simple photo or an idea, a good packaging solution will comes to you.
- 3:The handmade work of our paper box is excellent, Everyone pays attention to the small details.
- 4:We own the most advanced equipment and complete product lines,guarantee for the quickest speed to processing customer order.
- 5:Skilled QC technicians provide assurance that products are of the highest quality.
- 6:A variety of modes of transportation are available for you, just waiting for the goods.



Shenzhen Xianglong Paper Product & Packaging Co., Ltd.

755 86 28357756

anna01@xlpackaging.com

custom-packagingbox.com

1810, iSteel Asia No.1, 18 Fuan Avenue , Pinghu Sub-district, Longgang District, Shenzhen ,China . post code :518111