



XL Packaging Custom Luxury Boxes Food Grade Heart Shaped Paper Gift Box With Insert Recyclable Rigid Boxes With Ribbon For Chocolate

Our Product Introduction

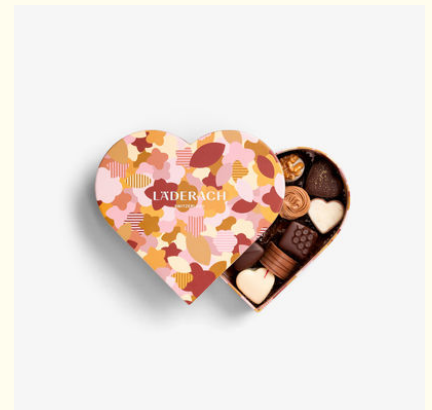
Basic Information

- Place of Origin: shenzhen china
- Brand Name: OEM/ODM
- Certification: ISO certificate, Disney, Sedex, FSC
- Model Number: Heartshaped Chocolate paper box
- Minimum Order Quantity: 500
- Price: discussible
- Packaging Details: Poly bag, standard export carton
- Delivery Time: 18-25
- Payment Terms: Western Union,T/T,MoneyGram,L/C
- Supply Ability: 200000 Piece/Pieces Per Month



Product Specification

- Printing Technics: Matt Lamination, Embossed
- Application: Chocolate Packaging
- Box Type: Heart Shape Chocolate Paper Box
- Thickness: 1.5mm
- Finishing: Matt Lamination
- Print: Gold Foil, Embossing
- Feature: Eco-friendly
- Surface Finishing: Glossy/Matte Lamination
- Highlight: **Heartshaped Paper Gift Box, Recyclable Rigid Paper Gift Box, Food Grade Paper Gift Box**



for more products please visit us on custom-packagingbox.com

Product Description

XL Packaging Custom Luxury Boxes Food Grade Half Round Paper Gift Box With Insert Recyclable Rigid Boxes With Gold Foil Embossing Matt Lamination Glossy For Chocolate

Do you need to customize custom chocolate box? Click to obtain a detailed quotation including material/process/duration Not sure if the custom chocolate box is suitable for your product? Click to apply for free samples (only need to pay for shipping)

[Request a Quote] [Get a Sample] <https://www.custom-packagingbox.com/contactus.html>
<https://www.custom-packagingbox.com/sale-45063671-luxury-custom-box-custom-wholesale-gift-packaging-premium-luxury-cosmetic-magnetic-gift-boxes-for-gi.html>
<https://www.custom-packagingbox.com/sale-53420698-xl-packaging-custom-luxury-boxes-customized-print-gold-foil-stamping-chocolate-gift-boxes-with-ribbo.html>
<https://www.custom-packagingbox.com/sale-53310681-xl-packaging-custom-packaging-factory-custom-luxury-boxes-white-chocolate-packaging-boxes-with-embos.html>
<https://www.custom-packagingbox.com/sale-50616732-xl-packaging-custom-luxury-boxes-eco-friendly-luxury-chocolate-gift-packaging-custom-valentine-candy.html>

Why Our XL Heart-Shaped Food-Grade Rigid Chocolate Boxes Stand Out

Every detail is engineered to balance romance, protection, food safety, and sustainability—addressing the key needs of chocolate brands, retailers, and love-themed gift-givers:

1. Iconic Heart Shape + XL Size for Romantic, Generous Gifting

Our customizable XL heart dimensions (up to 26cm x 24cm x 9cm) blend romantic symbolism with practicality—fitting 25+ gourmet truffles, 4–5 artisanal chocolate bars, mixed assortments (pralines, caramel hearts, chocolate-covered strawberries), or paired add-ons (like small love notes or mini jewelry boxes). The smooth, symmetrical heart silhouette (no sharp edges!) instantly signals gifting intent, making it a standout on retail shelves or as a Valentine's Day surprise. Paired with custom food-grade paper inserts (recyclable, tailored to your chocolate shapes), treats stay locked in place—preventing shifting, smudging, or breakage during shipping or display.

2. Food-Grade Recyclable Rigid Paper: Safety Meets Durability

We prioritize safety and sustainability with premium materials that never compromise on quality:

- 3mm Food-Grade Rigid Paperboard: The structural core is made from food-safe, recyclable rigid paperboard—free from harmful chemicals, ensuring no flavor transfer and keeping chocolates fresh. It offers exceptional sturdiness to resist crushing or warping, even during bulk shipping or stacking, with a satisfying heft that signals premium quality.
- Recyclable Exterior Finish: Choose from matte, glossy, or textured recyclable paper (including natural kraft for a rustic touch) in colors like red, pink, ivory, or black—all 100% recyclable and FSC-certified (optional) to align with eco-conscious branding. The smooth surface perfectly showcases romantic designs or logos.

The combination of food-grade safety and rigid durability ensures your chocolates stay protected and fresh, while the recyclable material resonates with modern consumers who value sustainable gifting. The heart shape adds an emotional layer that generic boxes can't match—turning unboxing into a romantic moment.

3. Full Customization: Ribbons, Inserts & Branding

Tailor every detail to match your brand and gifting theme, with romantic accents that enhance appeal:

- Branding & Design: Add gold/silver foil stamping, embossing/debossing (subtle heart textures), or water-based ink printing (romantic motifs like roses, love letters, or holiday themes). The heart shape's surface offers ample space for brand storytelling without cluttering the romantic aesthetic.
- Elegant Ribbon Bow: Each box comes with a pre-tied ribbon bow (recyclable satin, grosgrain, or jute) in colors like red, pink, gold, or ivory—affixed to the heart's "peak" for instant gift-ready charm. The ribbon is detachable, letting customers reuse it for crafts or future gifting, extending your brand's reach.
- Custom Inserts: Choose from food-grade paper pulp inserts (molded to heart-shaped chocolates or truffles), tissue-lined dividers (for separating flavors), or EVA foam (for extra protection of delicate treats). Inserts are fully recyclable and tailored to your XL heart size.

4. Safety & Sustainability: Dual Assurance

We address two critical consumer concerns—food safety and environmental responsibility—without compromise:

- Food-Safe Certification: All materials (rigid paperboard, inserts, adhesives) meet FDA food contact standards—free from BPA, phthalates, and toxic dyes. The box's lid-and-base closure creates a snug seal to lock in freshness, preventing moisture absorption or contamination.
- Eco-Credentials: 100% recyclable paperboard and exterior finishes, FSC-certified sourcing (optional), and biodegradable ribbons. Even printing inks are water-based and non-toxic, letting you market your brand as both luxurious and responsible.

SEO-Focused Features for Love & Retail Success

Our packaging is optimized for the keywords your target audience uses—boosting your independent site's visibility for romance and retail searches:

- Core Keyword Integration: Naturally embeds terms like "XL heart-shaped chocolate gift boxes," "food-grade recyclable rigid chocolate boxes," "custom chocolate boxes with ribbon & insert," and "luxury heart chocolate packaging"—matching search intent for love-themed givers and brands.
- Occasion Targeting: Highlights compatibility with Valentine's Day, weddings, anniversaries, and retail gifting—capturing searches like "heart-shaped chocolate boxes for Valentine's," "XL love-themed chocolate gift boxes," and "retail chocolate boxes with ribbon."
- Sustainability & Safety Keywords: Emphasizes "food-grade chocolate packaging," "recyclable rigid gift boxes," and "eco-friendly heart-shaped boxes"—catering to shoppers prioritizing safety and sustainability.

Our Customization & Wholesale Process – Romantic & Scalable

1. Share Your Romantic Vision: Tell us your XL heart size needs (e.g., fits 30 truffles + 2 heart-shaped bars), paper finish (matte/glossy), ribbon color/material, branding details (logo, love motifs), and order quantity.

2. Design Approval: Receive 2–3 3D mockups (showcasing heart shape proportions, ribbon placement, and insert fit) to refine details—we'll adjust colors, finishes, or closures until it's perfect (no hidden fees).
3. Quality Production: Benefit from strict quality checks (testing food safety compliance, rigid strength, and ribbon durability), fast turnaround (10–14 business days for standard orders), and flexible MOQs (starting at 300 units for small brands; bulk discounts for 1,000+ units).
4. Secure Shipment: Track your order in real time, with dedicated support to ensure timely delivery. All boxes are shipped in recycled, moisture-resistant packaging to arrive in pristine condition—ready for romantic gifting.

Who We Serve

- Chocolate Brands: Gourmet truffle makers, bean-to-bar creators, and confectioners launching love-themed or holiday collections.
- Retailers: Boutiques, department stores, and online shops curating Valentine's Day, wedding, or anniversary gift sets.
- Event Planners: Wedding favor designers, anniversary party organizers, or Valentine's events needing romantic, food-safe chocolate packaging.
- Corporate Gifting Teams: Brands seeking heart-shaped chocolate boxes for employee appreciation, client gifts, or love-themed campaigns.

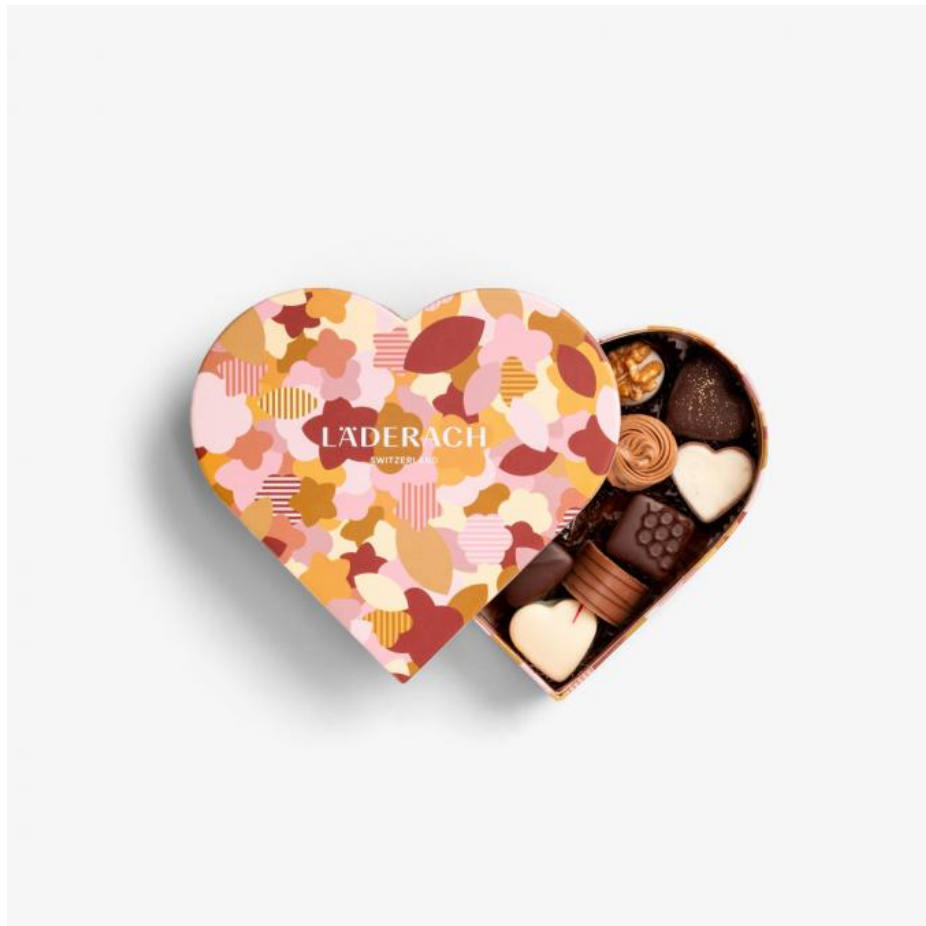
Get Your XL Heart-Shaped Chocolate Box Quote Today

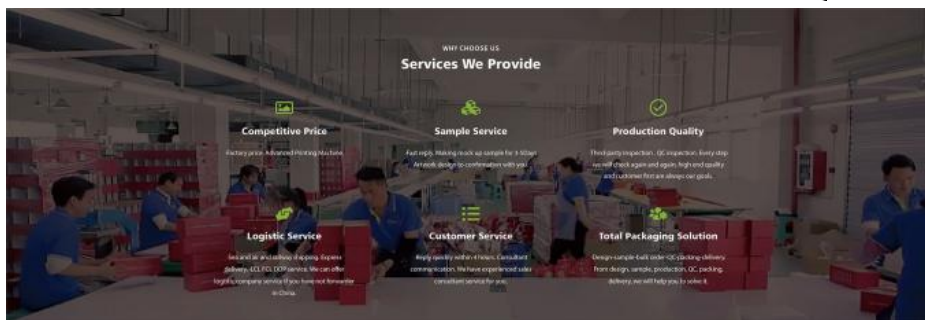
Ready to package your chocolates in a romantic, food-safe, and sustainable XL heart-shaped box that captivates gift-givers? Contact our team for a free, no-obligation quote. Share your chocolate specs, ribbon preferences, branding guidelines, and quantity needs—we'll craft a solution that boosts your SEO and turns browsers into loyal customers.

Keywords embedded naturally: XL heart-shaped chocolate gift boxes, food-grade recyclable rigid chocolate boxes, custom chocolate boxes with ribbon & insert, luxury heart chocolate packaging, heart-shaped boxes for Valentine's, eco-friendly chocolate gift boxes.

Product Description

| | |
|-----------------------|---|
| Item | Food Grade Heartshape Paper Gift Box With Insert Recyclable Rigid Boxes With Gold Foil Embossing Matt Lamination Glossy For Chocolate |
| Keywords | Chocolate Box, Red Chocolate Gift Box, Chocolate Paper Box |
| Size | 20x6x6cm, Customized |
| Printing | Purple, Brown |
| Surface Disposal | Gold foil, UV |
| Boxes Accessories | Food Grade Artpaper Paperboard |
| MOQ | 500pcs |
| Artwork Formats | AI, PDF, CDR, ETC are welcomed |
| Packaging | Poly Bag, Standard Export Carton |
| Sample Time | 5-7 days for Chocolate Paper Box |
| Production lead time: | 20 days for Chocolate Box |
| Payment | 30% deposit in advance, 70% balance against B/L. |
| QC | 3 times from material selection, 100% inspection for mass goods. |
| Certificate | ISO certificate, Disney, Sedex, FSC . |





FAQ:

1. Are you a trader or manufacturer?

We are both. We have our own factory concentrating on gift box production in Dongguan.

2. What's your main products?

We focus on paper printing and packaging. For meeting our customer demands, we also supply promotion gift items.

3. What is your delivery time?

It depends on your order item and quantity, 7-30 days accordingly.

4. Can I request samples?

In stock samples is free, can be sent you in 3 days, and the OEM samples in 5-7 days.

5. What's the shipping way?

Regarding the small quantity order, we can send them by DHL/Fedex express which we have 35% discount and the large quantity goods are shipped by ocean shipping according to client's demands.

6. Can you accept OEM or ODM?

Yes of course. And logo acceptable.

7. Still can't find the answer.

Please email us and we will try to help.

1810, iSteel Asia No.1, 18 Fuan Avenue , Pinghu Sub-district, Longgang District, Shenzhen ,China . post code :518111