



## XL Packaging Custom Luxury Boxes Custom Chocolate Boxes Packaging Durable Design for Chocolate Presents 1.5mm Thickness

Our Product Introduction

for more products please visit us on custom-packagingbox.com

### Basic Information

- Place of Origin: shenzhen china
- Brand Name: OEM/ODM
- Certification: ISO certificate, Disney, Sedex, FSC
- Model Number: Chocolate paper box
- Minimum Order Quantity: 500
- Price: discussible
- Packaging Details: Poly bag, standard export carton
- Delivery Time: 18-25
- Payment Terms: Western Union,T/T,MoneyGram,L/C
- Supply Ability: 200000 Piece/Pieces Per Month

XL PACKAGING



### Product Specification

- Printing Technics: Matt Lamination, Embossed
- Application: Chocolate Packaging
- Box Type: Magnetic Closure Chocolate Paper Box
- Thickness: 1.5mm
- Finishing: Texture, UV
- Print: White, Black Foil, Embossing
- Feature: Eco-friendly
- Surface Finishing: Glossy/Matte Lamination
- Highlight: **Chocolate Presents Chocolate Boxes Packaging, 1.5mm Thickness Chocolate Boxes Packaging, Durable Design Chocolate Boxes Packaging**

XL PACKAGING



### More Images

XL PACKAGING



XL PACKAGING



## Product Description

### XL Packaging Custom Luxury Boxes Custom Chocolate Boxes for Gifts – Premium Packaging, Durable Design for Chocolate Presents

Do you need to customize custom chocolate box? Click to obtain a detailed quotation including material/process/duration Not sure if the custom chocolate box is suitable for your product? Click to apply for free samples (only need to pay for shipping)

[\[Request a Quote\]](#) [\[Get a Sample\]](#) <https://www.custom-packagingbox.com/contactus.html>

<https://www.custom-packagingbox.com/sale-45063671-luxury-custom-box-custom-wholesale-gift-packaging-premium-luxury-cosmetic-magnetic-gift-boxes-for-gi.html>

<https://www.custom-packagingbox.com/sale-53419208-cmyk-pantone-printed-luxury-chocolate-boxes-with-easy-open-design-embossed-logo-and-anti-tarnish-pap.html>

<https://www.custom-packagingbox.com/sale-50860251-luxury-chocolate-paper-box-candy-nuts-gift-packaging-silver-foil-semicircle-chocolate-box.html>

<https://www.custom-packagingbox.com/sale-44943220-custom-luxury-chocolate-gift-boxes-kraft-box-for-chocolate-packaging-with-lid.html>

<https://www.custom-packagingbox.com/sale-44942254-luxury-paperboard-chocolate-paper-box-black-magnetic-gift-box-with-paper-dividers.html>

Indulge in the art of gifting with our **Custom Chocolate Boxes**, designed to transform your sweet creations into unforgettable presents. Crafted with premium materials, durable structures, and fully customizable aesthetics, these boxes blend functionality, luxury, and brand storytelling for chocolates, truffles, and confectionery gifts.

#### Key Features: Premium Quality Meets Practical Innovation

##### 1. Durable Construction for Chocolate Protection

- **Rigid Board Materials:**
  - 300gsm–600gsm high-density cardboard or corrugated board to prevent crushing, ideal for shipping or shelf display.
  - Optional moisture-resistant coatings (e.g., PE laminates) to shield chocolates from humidity and heat.
- **Secure Closures:**
  - Magnetic flip lids, ribbon ties, or tuck-top designs ensure chocolates stay fresh and intact during transit.
  - Reinforced corners and edges for added sturdiness in bulk orders or gift baskets.

##### 2. Luxury Design Elements for Memorable Gifting

- **Premium Finishes:**
  - **Foil Stamping:** Gold, silver, or rose gold accents for logos, brand names, or festive motifs (e.g., hearts, snowflakes).
  - **Embossing/Debossing:** Tactile details like chocolate swirls, truffle textures, or elegant monograms.
  - **Soft-Touch Lamination:** Matte or velvet-like coatings for a sophisticated tactile experience.
- **Transparent Windows:**
  - Die-cut PVC/PET windows to showcase chocolates (e.g., hand-painted truffles, gourmet bars) without opening the box.

##### 3. Customization for Every Occasion

- **Branding & Personalization:**
  - Full-color CMYK/Pantone® printing to match brand palettes or event themes (weddings, holidays, corporate logos).
  - Add QR codes linking to recipes, gift messages, or chocolate origin stories.
- **Functional Inserts:**
  - **Compartmental Trays:** Foam, cardboard, or velvet-lined dividers to prevent chocolates from shifting (fits 6–24 pieces).
  - **Temperature Control:** Optional insulated liners for shipping delicate chocolates (e.g., melt-prone fillings).
- **Size & Shape Options:**
  - Classic rectangular/square boxes, round truffle boxes, or custom shapes (hearts, stars, holiday-themed silhouettes).

##### 4. Eco-Friendly & Sustainable Choices

- **Recyclable Materials:** FSC®-certified cardboard, biodegradable inks, and compostable window films (PLA) for eco-conscious brands.
- **Reusable Packaging:** Sturdy designs encourage repurposing as jewelry boxes or keepsake containers.

### Why Choose Our Custom Chocolate Boxes?

**Preserve Freshness:** Moisture-resistant materials and secure inserts keep chocolates crisp and flavorful.

**Boost Brand Perception:** Premium finishes and custom designs elevate perceived value for artisanal or luxury brands.

**Cost-Effective Solutions:** Low MOQs (starting at 100 units) and flat-packed shipping reduce storage/transport costs.

**Fast Turnaround:** 7–14 days from design approval to delivery, with rush options for last-minute orders.

#### Technical Specifications

- **Material:** Rigid cardboard, corrugated board, or eco-friendly alternatives
- **Finish Options:** Gloss/matte lamination, foil stamping, embossing, spot UV
- **Interior Linings:** Food-safe paper, velvet, or anti-tarnish fabric
- **Weight Capacity:** Up to 2kg (with reinforced inserts)
- **Compliance:** FDA/LFGB-certified for direct food contact

#### How to Order Your Custom Chocolate Boxes

1. **Share Your Vision:** Provide chocolate dimensions, design themes, and branding assets (logos, Pantone codes).
2. **Design Mockup:** Receive 2–3 digital proofs with proposed finishes and layouts.
3. **Sample Approval:** Test a physical sample to ensure fit, print quality, and durability.
4. **Production & Delivery:** Enjoy secure worldwide shipping with tracking (express or economy options).

#### Turn Chocolates into Cherished Memories

Whether you're a chocolatier, a gift shop owner, or a brand creating corporate treats, our **Custom Chocolate Boxes** add a layer of elegance and care to every piece. Contact us today to discuss your project—let's craft packaging that's as delightful

as the chocolates inside!

## Product Description

Item	<b>Wholesale Chocolate Gift Boxes – Custom Packaging, Bulk Orders for Advent Calendars &amp; Gift Sets</b>
Keywords	Chocolate Box, Red Chocolate Gift Box, Chocolate Paper Box
Size	Customized
Printing	Purple, Brown
Surface Disposal	Gold foil, UV
Boxes Accessories	Food Grade Kraft Paperboard
MOQ	500pcs
Artwork Formats	AI, PDF, CDR, ETC are welcomed
Packaging	Poly Bag, Standard Export Carton
Sample Time	5-7 days for Chocolate Paper Box
Production lead time:	20 days for Chocolate Box
Payment	30% deposit in advance, 70% balance against B/L.
QC	3 times from material selection, 100% inspection for mass goods.
Certificate	ISO certificate, Disney, Sedex, FSC .

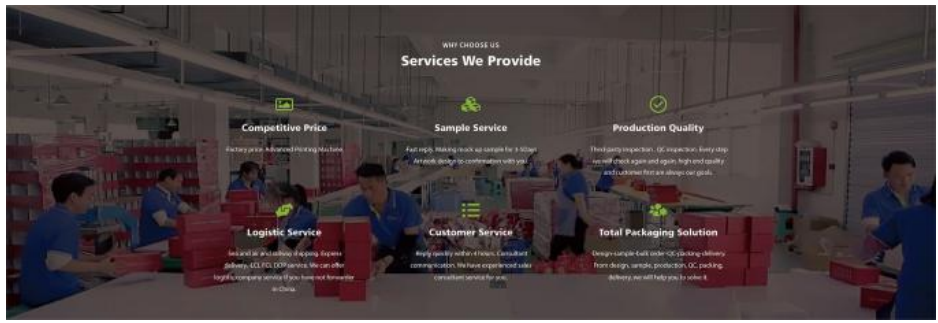


 XL PACKAGING

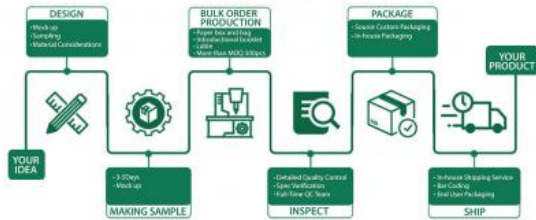


 XL PACKAGING





## HOW TO CUSTOMIZED??



Blister



Cardboard



EPE Foam



EVA



Laser Engraving



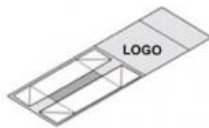
Ribbon



Silk Fabric



Velvet with EVA



Folding Gift Box



Cylinder Box



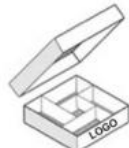
Paper Bag



Shipping Box



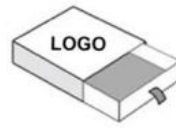
Magnetic Gift Box



Base and lid Box



Flip Box



Slide Drawer Box

## CMYK or PANTONE

Blue Red yellow Black ( Be used for the printing of varied colors )



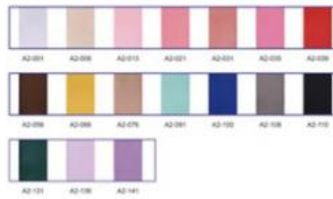
### Surface Paper you can choose



### Polyester Grosgrain ribbon n ribbon



### Polyester satin ribbon



### FAQ:

1. Are you a trader or manufacturer?

We are both. We have our own factory concentrating on gift box production in Dongguan.

2. What's your main products?

We focus on paper printing and packaging. For meeting our customer demands, we also supply promotion gift items.

3. What is your delivery time?

It depends on your order item and quantity, 7-30 days accordingly.

4. Can I request samples?

In stock samples is free, can be sent you in 3 days, and the OEM samples in 5-7 days.

5. What's the shipping way?

Regarding the small quantity order, we can send them by DHL/Fedex express which we have 35% discount and the large quantity goods are shipped by ocean shipping according to client's demands.

6. Can you accept OEM or ODM?

Yes of course. And logo acceptable.

7. Still can't find the answer.

Please email us and we will try to help.



Shenzhen Xianglong Paper Product & Packaging Co., Ltd.

755 86 28357756

anna01@xlpackaging.com

custom-packagingbox.com

1810, iSteel Asia No.1, 18 Fuan Avenue, Pinghu Sub-district, Longgang District, Shenzhen, China. post code: 518111